



Fund Development team to help you reach your fundraising goals

Services

Major Gifts ▪ Planned Gifts ▪ Bequests ▪ Paul Harris Society
Events ▪ Training ▪ Major Donor Recognition
[Rotary Direct](#) Enrollment



Espen Malmberg

E: espen.malmberg@rotary.org / **T:** +41-44-387 7174

Manager

Speaks English, Norwegian, Swedish and French

Espen manages the foundation team at the RI Europe and Africa Office. Role includes support for all grant related, fund development, and recognition activities. Collaborates with Regional Rotary Foundation Coordinators and Endowed and Major Gift Advisors to increase Rotarian engagement and support for the Foundation. Supports major gift initiatives in zones 17, 18 and 22 French speaking.



Elizabeth Lamberti

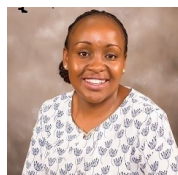
E: elizabeth.lamberti@rotary.org / **T:** +41 44-387 7166

Senior Major Gifts Officer

Speaks English and Italian

Supports Zones 14, 13B, 20C, 21 B, and 22 South (9350, 9370, 9400)

Elizabeth supervises the front-line gift officer team and also serves as Senior Major Gifts Officer. Works with volunteer leadership to facilitate major gifts and testamentary commitments, concentrating on US\$10,000 and above. Helps individual donors meet their charitable and financial goals by creating customized gift plans that may include estate gifts. Also works with volunteers to provide strategies and resources for donor acquisition and retention. Key initiatives include major gifts, Bequest Society and Paul Harris Society.



Elizabeth Ng'ang'a

E: elizabeth.nganga@rotary.org or **T:** +254 710 778 404

Fund Development Specialist

Speaks English and Swahili

Supports Zone 22 English speaking (9102, 9110, 9125, 9141, 9142, 9211, 9212, 9210)

Based in Nairobi, Kenya, Elizabeth works with volunteer leadership to increase TRF giving. Helps individual donors meet their charitable and financial goals by creating customized gift plans that may include estate gifts. Also provides strategies and resources to facilitate donor acquisition, and retention opportunities together with volunteers. Key initiatives include Annual Fund, EREY, major gifts, bequests and the Paul Harris Society.



Peter Schnell

E: peter.schnell@rotary.org / **T:** +41 44-387 7170

Major Gifts Officer

Speaks English, German, Dutch, Flemish, French and Spanish

Supports Zones 13, 15, 20B, 21A

Peter works with volunteer leadership to facilitate major gifts and testamentary commitments, concentrating on US\$10,000 and above. Helps individual donors meet their charitable and financial goals by creating customized gift plans that may include life insurance, and estate gifts. Also provides strategies and resources to facilitate donor acquisition, and retention opportunities together with volunteers. Key initiatives include major gifts, Bequest Society and Paul Harris Society.

Foundation Services Team to help you with all Foundation matters

Questions & Services

TRF Grants ▪ [My Rotary](#) ▪ Contributions ▪ Corrections ▪ Training ▪ Polio Paul Harris Fellow and Recognition Items ▪ [Foundation Recognition Points](#) ▪ DDF Donations

Reports

Donor History Report ▪ Club Fundraising Analysis ▪ Paul Harris Fellow Report
Monthly Contribution Report ▪ EREY Eligibility Report ▪ Club Recognition Summary
District Fundraising Profile ▪ PolioPlus Report ▪ Paul Harris Society Report ▪
Banner Recognition Report ▪ Recognition Reports for Bequest Society, Major Donor, and AKS



Lydia Alocen

E: lydia.alocen@rotary.org / T: +41-44-387 7175

Supervisor

Speaks: Italian, French, Spanish, English and German

Works with Zones 12, and part of 13

Supports districts: 1960, 1970, 2031, 2032, 2041, 2042, 2050, 2060, 2071, 2072, 2080, 2090, 2100, 2110, 2120, 2201, 2202, 2203



Vanessa Court-Payen

E: vanessa.court-payen@rotary.org / T: +41-44-387 7186

Senior Coordinator

Speaks: English, French, Italian and Spanish

Works with Zones 11, part of 13, part of 18, 20 (French speaking)

Supports districts: 1510, 1520, 1550, 1560, 1570, 1580, 1590, 1600, 1610, 1620, 1630, 1640, 1650, 1660, 1670, 1680, 1690, 1700, 1710, 1720, 1730, 1740, 1750, 1760, 1770, 1780, 1790, 2170, 9010, 9101, 9102, 9150, 9220



Valentina Guckes

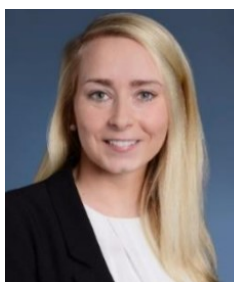
E: valentina.guckes@rotary.org / T: +41-44-387-7187

Coordinator

Speaks: German, English and French

Works with Zones, part of 13, 14, 19, part of 20 (English speaking)

Supports districts: 1800, 1810, 1820, 1830, 1841, 1842, 1850, 1860, 1870, 1880, 1890, 1900, 1910, 1911, 1912, 1913, 1920, 1930, 1940, 1950, 1980, 1990, 2000, 2232, 2240, 2241, 2420, 2430, 2440, 2451, 2452, 2470, 2482, 2483, 2484, 2490, and non-districted clubs in Albania and Kosovo



Anja Stokke

E: anja.stokke@rotary.org / T: +41-44-387 7144

Coordinator

Speaks Norwegian and English

Works with Zones 15, 16, part of 20 (English speaking)

Supports districts: 1360, 1380, 1390, 1400, 1410, 1420, 1430, 1440, 1450, 1461, 1462, 1470, 1480, 2220, 2231, 2250, 2260, 2275, 2290, 2305, 2310, 2320, 2330, 2340, 2350, 2360, 2370, 2380, 2390, 2400, 2410, 9110, 9125, 9141, 9142, 9210, 9211, 9212, 9350, 9370 and 9400