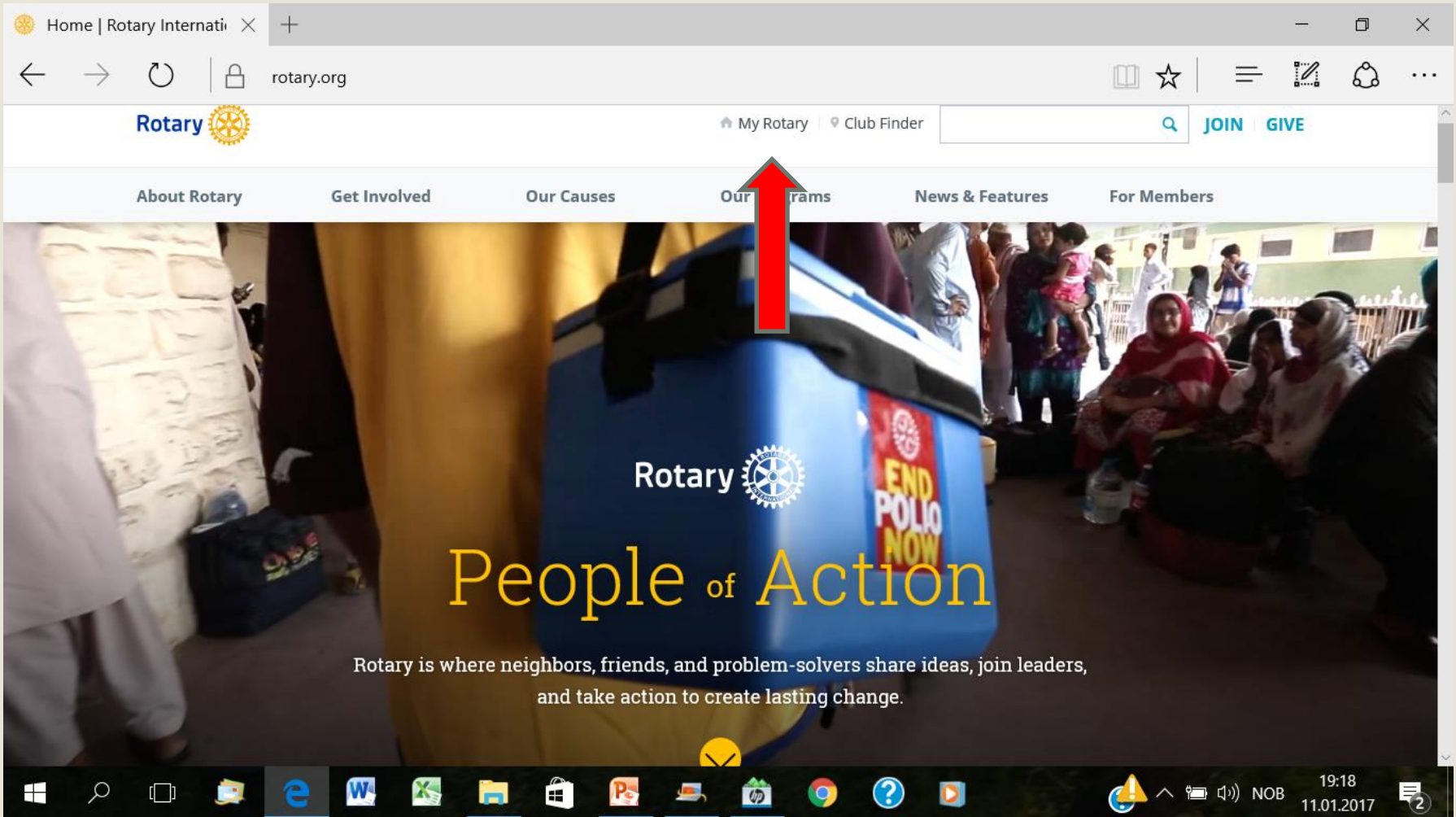




ROTARY CLUB CENTRAL


Registrere klubbens data.

PDG Jan Sverre Hanssen, Råde RK




Home | Rotary Internati × +

rotary.org

Rotary  My Rotary Club Finder [JOIN](#) [GIVE](#)

About Rotary Get Involved Our Causes **Our Programs** News & Features For Members

Rotary  **People of Action**

END POLIO NOW

Rotary is where neighbors, friends, and problem-solvers share ideas, join leaders, and take action to create lasting change.

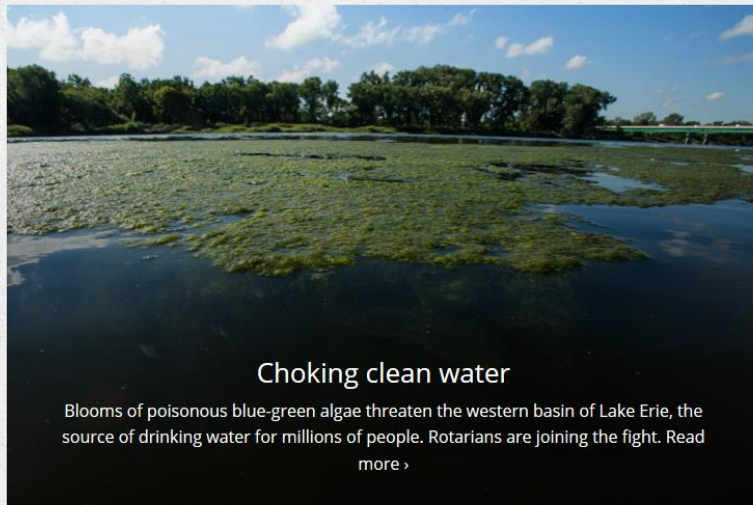
Windows taskbar: e, W, [Icons], 19:18, 11.01.2017

My Rotary

The screenshot shows a web browser window with the URL `rotary.org/myrotary`. The page header includes the Rotary logo and navigation links: My Rotary, Exchange Ideas, Take Action, Learning & Reference, Manage, The Rotary Foundation, News & Media, and Member Center. A search bar is located on the right. The main content area features a large banner with the text "CO ROTAR COMM" and "SIGN IN / REGISTER". A modal window titled "SIGN IN" is overlaid on the banner. The modal contains the following elements:

- SIGN IN** (Section Header)
- SIGN-IN EMAIL *** (Text label above an input field)
- Forgot email? ?** (Text link)
- PASSWORD *** (Text label above an input field)
- Forgot password?** (Text link)
- REMEMBER ME ?** (Text link)
- SIGN IN** (Yellow button)
- CREATE ACCOUNT** (White button with blue border)
- WHY CREATE AN ACCOUNT?** (Section Header)
- Text: "Signing in to My Rotary gives you a customized experience and easier access to tools and information that are relevant to you."
- Text: "Anyone can create an account and sign in. Existing Member Access users can re-register with their current user ID. For tips on registering and using the site, see our [website resources](#). For assistance, [contact us](#)."

A red arrow points from the left towards the "SIGN IN" modal. The background banner also has "GIVE" and "JOIN" buttons in the top right corner. At the bottom of the page, there are three circular icons: a group of people, a lightbulb with a circular arrow, and a hand holding a person. The Windows taskbar is visible at the bottom of the browser window, showing various application icons and the system tray with the date and time (08:03 07.01.2016).



My Club Snapshot

Club Name
Råde
Website

What's new

President-elect Ian H.S. Riseley chose *Rotary: Making a Difference* as his theme for 2017-18. [Find theme logo and](#)

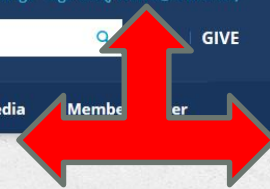
Rotary Spotlight



Celebrate with us in Atlanta! [Register for the convention](#) by 31 March and save. >



You can help end polio. [Learn how >](#)



My Rotary

My Rotary | Rotary × +
my.rotary.org/en

Choking clean water

Blooms of poisonous blue-green algae threaten the western basin of Lake Erie, the source of drinking water for millions of people. Rotarians are joining the fight. [Read more >](#)

My Club Snapshot

Club Name
Råde

Website

Meeting Location
Kihl gård
Kihlsveien 15, Råde, 1640, Norway

Meeting Date and Time
Monday 8:00 PM

Members
25

Charter Date
29-Sep-1969

Club President
Morten Wold

Rotary Club Central
[View Club Goals >](#)

What's new

President-elect Ian H.S. Riseley chose *Rotary: Making a Difference* as his theme for 2017-18. [Find theme logo and materials](#)


Celebrate The Rotary Foundation's centennial, explore our interactive timeline to brush up on your Foundation history, and find ideas for planning your own event at [centennial.rotary.org](#).

Discover how your club can use the **new club flexibility policies** to decide when, where, and how it meets.


Announcements

[Rotary International Board adopts new zone structure](#)
17-Feb-2017

Celebrate with us in Atlanta! [Register for the convention](#) by 31 March and save. >



You can help end polio. [Learn how >](#)



Learn about the people and events that shaped our Foundation's history at [centennial.rotary.org](#). >

Group Discussions

[My Groups](#) | [All Groups](#)

[View My Groups >](#)

Windows taskbar: 14:37, 13.03.2017

Rotary Club Central

The screenshot shows a web browser window with the URL `map.rotary.org/en/rcc/Pages/ClubGoalsProgress.aspx`. The page header includes the Rotary logo and 'Club Central'. A user is logged in as 'Jan Hansen'. The main navigation bar has tabs for 'Your Club', 'Service', and 'Foundation Giving'. A sidebar on the left contains a 'Club View' menu with sub-items: 'District View', 'Club Group View', 'Rate Clubs', 'Global View', 'Resources', and 'Reports'. A 'Trends' section features a bar chart titled 'Membership Trends 2012 - 17'. Two red arrows highlight the 'Club View' menu and the 'Your Club' tab.

My Rotary | Rotary Rotary.org: × +

map.rotary.org/en/rcc/Pages/ClubGoalsProgress.aspx

Donate Language Selector

Rotary Club Central

Welcome Jan Hansen

Club View

District 2260 | Club Råde

Your Club Service Foundation Giving

Club View

District View

Club Group View

Rate Clubs

Global View

Resources

Reports

Your Club

Print Page

Successful clubs achieve their goals by staying vibrant, flexible, and innovative. This tab provides you the opportunity to view and track membership, Rotarian engagement, club communication, and public relations goals.

Current, incoming, and immediate past club leaders — the president, secretary, treasurer, executive secretary, Foundation chair, and membership chair — can edit goals and achievements. All club members can view goals and achievements.

Trends

This graph shows your club's membership over five years. Click on the labels in the legend to add or remove features in the chart. Hover over bars or lines in the chart to see details.

The chart below shows the age and gender trends over three years. For more information, club leaders can click on "View Details."

Membership Trends
2012 - 17

Year	Membership
2012	~28
2013	~28
2014	~28
2015	~28
2016	~28
2017	~28

Trender og utvikling

My Rotary | Rotary Rotary.org: map.rotary.org/en/rcc/Pages/ClubGoalsProgress.aspx

District 2260 | Club Råde

Your Club Service Foundation Giving

Club View
District View
Club Group View
Rate Clubs
Global View
Resources
Reports

Your Club

Successful clubs achieve their goals by staying vibrant, flexible, and innovative. This tab provides you the opportunity to view and track membership, Rotarian engagement, club communication, and public relations goals.

Current, incoming, and immediate past club leaders — the president, secretary, treasurer, executive secretary, Foundation chair, and membership chair — can edit goals and achievements. All club members can view goals and achievements.

Trends

This graph shows your club's membership over five years. Click on the labels in the legend to add or remove features in the chart. Hover over bars or lines in the chart to see details.

The chart below shows the age and gender trends over three years. For more information, club leaders can click on "View Details."

Membership Trends 2012 - 17

Year	1 July	Goal
2012-13	27	
2013-14	28	
2014-15	27	
2015-16	24	
2016-17	23	

Legend: 1 July (blue bar), Goal (orange bar)

Back to top

Målsetting og utvikling

My Rotary | Rotary Rotary.org: map.rotary.org/en/rcc/Pages/ClubGoalsProgress.aspx

Goals and Progress

Current, incoming, and immediate past club leaders can click "Edit" to set goals and achievements. All club members can click "View" to see goal details.

Select the year you want to edit or view.

2015-16 2016-17 **2017-18**

Membership

- 1 JULY 2017	- 2017-18 GOAL	25 2017-18 YEAR TO DATE
------------------	----------------------	-------------------------------

[EDIT](#)

Details

		2017-18 GOAL
Membership		-

Rotarian Engagement

25 2016-17 YEAR TO DATE	- 2017-18 GOAL	2017-18 YEAR TO DATE
-------------------------------	----------------------	-------------------------

[EDIT](#)

Details

2016-17 YEAR TO DATE	2017-18 GOAL	2017-18 YEAR TO DATE
-------------------------	-----------------	-------------------------

Members participating in

14:59 13.03.2017

Ungdomsprogram

Youth Program Participants

 EDIT

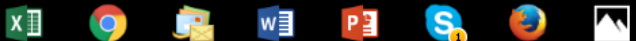
▼ Details

	2016-17 YEAR TO DATE	2017-18 GOAL	2017-18 YEAR TO DATE
Number of inbound Youth Exchange students	-	-	-
Number of outbound Youth Exchange students	-	-	-
Number of RYLA participants	-	-	-



Copyright © 2017 Rotary International

[Contact Us](#) | [Privacy Policy](#) | [Terms of use](#)



Rapporter

Rotary.org: map.rotary.org/en/rcc/Pages/ClubDataDownloadReport.aspx

Your Club Service Foundation Giving

- Club View
- District View
- Club Group View
- Rate Clubs
- Global View
- Resources
- Reports**



Reports

Print Page

- Individual Reports
- Club Reports
- District Reports

Individual Reports

- Donor History Report

Club Reports

- Benefactor Report
- Club Recognition Summary
- Club Foundation Banner Report
- Major Donor, Arch C. Klumph Society and Bequest Society Report
- Club Fundraising Analysis
- Paul Harris Society Report

Back to top

Windows taskbar with icons for Start, Search, File Explorer, Edge, Word, PowerPoint, Chrome, and system tray showing time 19:47 and date 11.01.2017.

Rapporter



CLUB RECOGNITION SUMMARY

AS OF 13 MARCH 2017

Råde, Norway

District: 2260	Paul Harris Fellows: 7	Bequest Society: 0	Rotarian Donors: 5	Rotary Direct Donors: 0	All-Time Giving: \$39,998.76
Club: 12896	Benefactors: 0	Major Donors: 0	Rotarian Non-Donors: 20	Non-Rotarian Donors: 0	

Rotary ID	Name	Club Member	Recognition Amount	Current PHF Level	PHF Date	Foundation Recognition Pts Available	— Last Contribution —	Benefactor	Rotary Direct
12896	R/C of Råde					13,817.16	Jan-2017	AF-SHARE	
9259470		Y							N
7043439		Y							N
5467055		Y							N
5467053		Y	1,000.00	PHF	Dec-2011				N
7043444		Y							N
5851396		Y	1,000.00	PHF	Sep-2009				N
7043434		Y							N
2361661		Y	4,125.47	PHF+3	Oct-2014	2,125.47	May-2016	AF-SHARE	N
6460243		Y	1,000.00	PHF	Oct-2007				N
316063		Y	1,100.00	PHF	Jun-2015	100.00	Sep-2015	AF-SHARE	N
70434		Y							N
5467		Y	100.00			100.00	Sep-2015	AF-SHARE	N
846		Y							N
5189		Y	100.00			100.00	Sep-2015	AF-SHARE	N
70434		Y							N
853572		Y							N
249885		Y	1,000.00	PHF	Oct-2016				N
5670504		Y	2,100.00	PHF+1	Dec-2011	100.00	Sep-2015	AF-SHARE	N
6579887		Y							N
7043437		Y							N
2232495		Y							N
5467098		Y							N
8691872		Y							N
9772093		Y							N
7043443		Y							N